

1. Overall Summary I

Traffic

	This Month	Last Month	% Trend
Visits	9 206	10 511	-12,42
Visitors	8 419	9 747	-13,62
Active Visitors	32	31	3,23
Returning Visitors	364	386	-5,70
Unique IPs	6 679	7 535	-11,36
Impressions	24 937	30 385	-17,93

Where Do Visitors Most Often Come From

		Visits	% Share
Referring Page	http://www.digizone.cz/	2 136	23,39
Referring Server	www.digizone.cz	5 112	59,11
Search Engine	Seznam.cz (fulltext CR)	2 143	68,60
Search Query	digitální vysílání	894	28,62

Most Common Technologies

		Visits	% Share
Browser	MS Internet Explorer (Win) 6.x	4 160	45,19
Operating System	MS Windows NT Technologie	8 594	93,35
Screen Resolution	1024 x 768 pixels	4 063	44,13
Window Size	801 - 1024 pixels	4 741	51,50
Language	Czech	8 705	94,56

Behavior on the Site

		Visits	% Share
Most Viewed Page	http://regiony.digizone.cz/	10 423	41,80
Most Common Entry Point	http://regiony.digizone.cz/	6 155	66,47
Most Common Exit Point	http://regiony.digizone.cz/	3 891	42,02
Most Common Time per Visit	0:30	1 452	25,74
Most Common Time per Page	0:30	7 846	50,05
Most Common Pages per Visit	1	3 618	39,07

Averages

	count
Average Pages per Visit	2,71
Average Daily Visits	296,97
Average Weekly Visits	2 078,77
Average Daily Visitors	289,06
Average Weekly Visitors	2 023,45
Average Daily Active Visitors	8,35
Average Weekly Active Visitors	58,48
Average Daily Returning Visitors	4,39
Average Weekly Returning Visitors	30,71
Average Daily Unique IPs	280,29
Average Weekly Unique IPs	1 962,03
Average Daily Impressions	804,42
Average Weekly Impressions	5 630,94

2. Overall Summary II

Visitors - Year view



Active Visitors - Year view

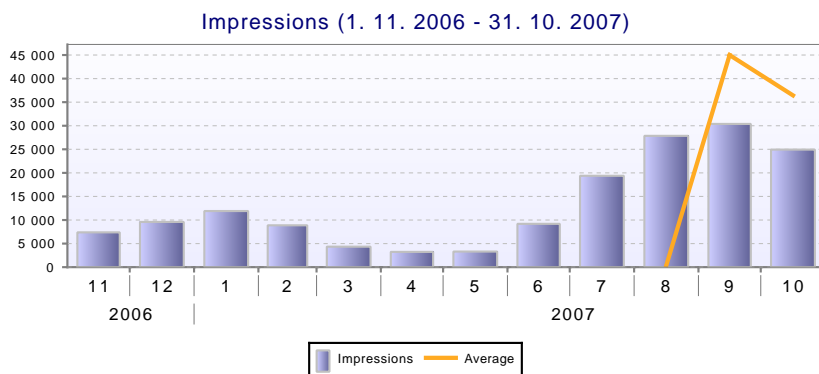


Returning Visitors - Year view



3. Overall Summary II

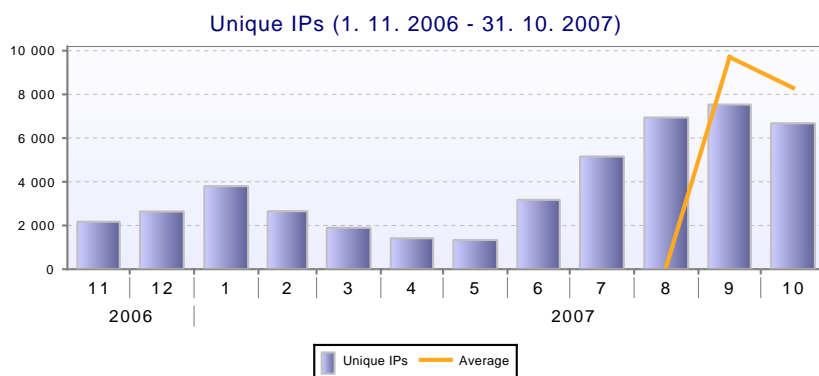
Impressions - Year view



Visits - Year view



Unique IPs - Year view



4. Detailed Statistics

Visitors

Active Visitors

Returning Visitors

Visits

Unique IPs

Impressions

Visited Pages

Entry Points

Exit Points

Referring Servers

Referring Search Engines

Search Queries

Technical Data

More Technical Data

Hosts by Region in the Czech Republic

Hosts by Connection Type

Hosts by Internet Service Provider

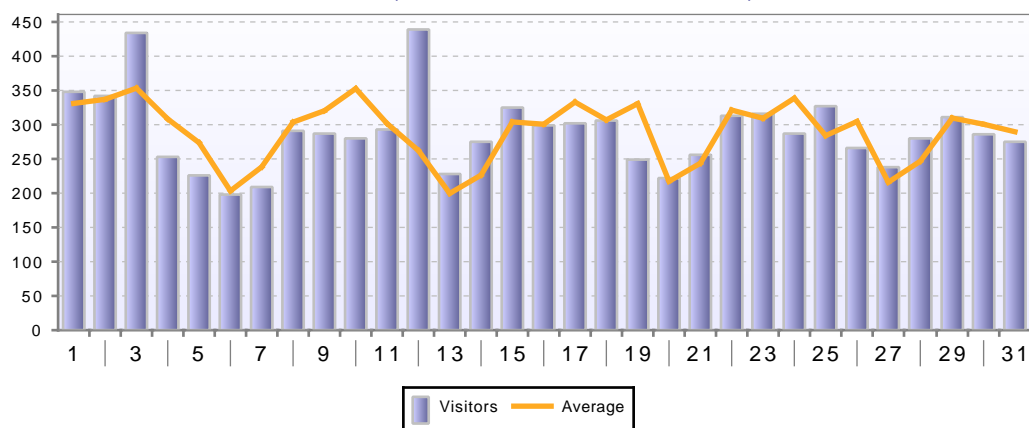
Time per Page

Time per Visit

Pages per Visit

5. Visitors

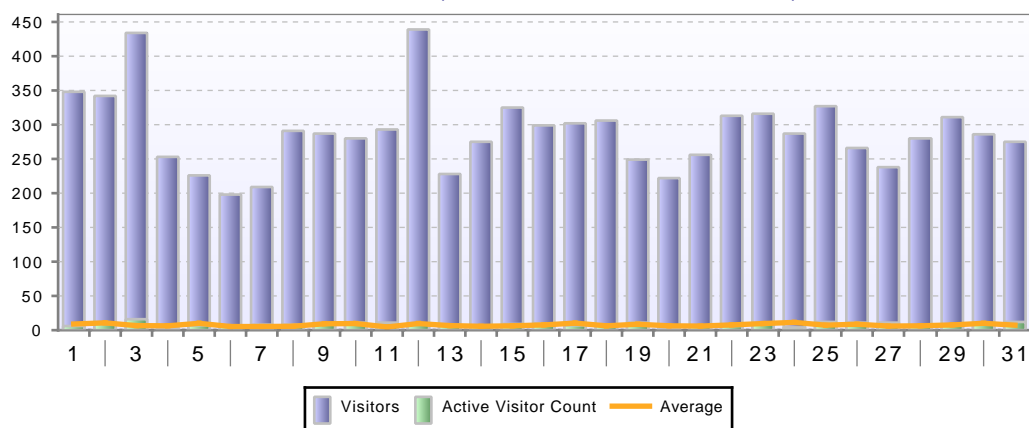
Visitors (1. 10. 2007 - 31. 10. 2007)



day	Visitors	Average	%
1. 10. 2007	348	331,00	3,88
2. 10. 2007	342	337,00	3,82
3. 10. 2007	434	353,33	4,84
4. 10. 2007	253	308,33	2,82
5. 10. 2007	226	273,67	2,52
6. 10. 2007	198	203,33	2,21
7. 10. 2007	209	238,33	2,33
8. 10. 2007	291	303,67	3,25
9. 10. 2007	287	320,33	3,20
10. 10. 2007	280	352,67	3,12
11. 10. 2007	293	301,67	3,27
12. 10. 2007	439	262,33	4,90
13. 10. 2007	228	199,67	2,54
14. 10. 2007	275	226,33	3,07
15. 10. 2007	325	304,00	3,63
16. 10. 2007	299	300,67	3,34
17. 10. 2007	302	333,00	3,37
18. 10. 2007	306	307,00	3,41
19. 10. 2007	249	330,67	2,78
20. 10. 2007	222	217,33	2,48
21. 10. 2007	256	243,67	2,86
22. 10. 2007	313	321,33	3,49
23. 10. 2007	316	309,33	3,53
24. 10. 2007	287	338,67	3,20
25. 10. 2007	327	284,00	3,65
26. 10. 2007	266	304,67	2,97
27. 10. 2007	238	216,00	2,66
28. 10. 2007	280	246,67	3,12
29. 10. 2007	311	309,67	3,47
30. 10. 2007	286	300,67	3,19
31. 10. 2007	275	289,67	3,07

6. Active Visitors

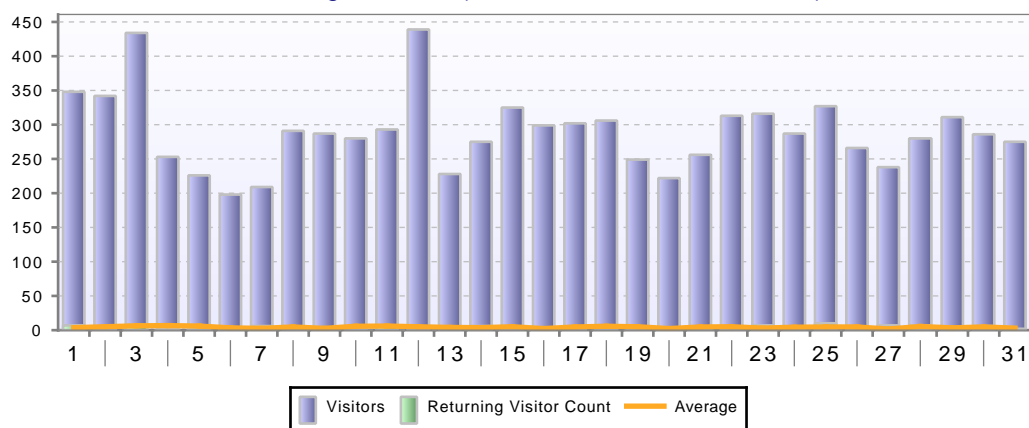
Active Visitors (1. 10. 2007 - 31. 10. 2007)



day	Visitors	Active Visitor Count	Average	%
1. 10. 2007	348	6	9,00	2,32
2. 10. 2007	342	9	10,67	3,47
3. 10. 2007	434	16	6,67	6,18
4. 10. 2007	253	3	6,33	1,16
5. 10. 2007	226	7	10,00	2,70
6. 10. 2007	198	7	5,33	2,70
7. 10. 2007	209	8	5,33	3,09
8. 10. 2007	291	8	5,67	3,09
9. 10. 2007	287	10	9,33	3,86
10. 10. 2007	280	11	9,67	4,25
11. 10. 2007	293	11	4,67	4,25
12. 10. 2007	439	8	9,67	3,09
13. 10. 2007	228	8	6,67	3,09
14. 10. 2007	275	6	5,67	2,32
15. 10. 2007	325	9	6,33	3,47
16. 10. 2007	299	10	7,67	3,86
17. 10. 2007	302	7	10,33	2,70
18. 10. 2007	306	8	6,33	3,09
19. 10. 2007	249	11	8,67	4,25
20. 10. 2007	222	3	6,33	1,16
21. 10. 2007	256	5	6,00	1,93
22. 10. 2007	313	6	7,67	2,32
23. 10. 2007	316	10	9,67	3,86
24. 10. 2007	287	4	11,33	1,54
25. 10. 2007	327	12	7,33	4,63
26. 10. 2007	266	11	8,67	4,25
27. 10. 2007	238	11	6,00	4,25
28. 10. 2007	280	7	6,33	2,70
29. 10. 2007	311	7	7,67	2,70
30. 10. 2007	286	8	10,00	3,09
31. 10. 2007	275	12	7,33	4,63

7. Returning Visitors

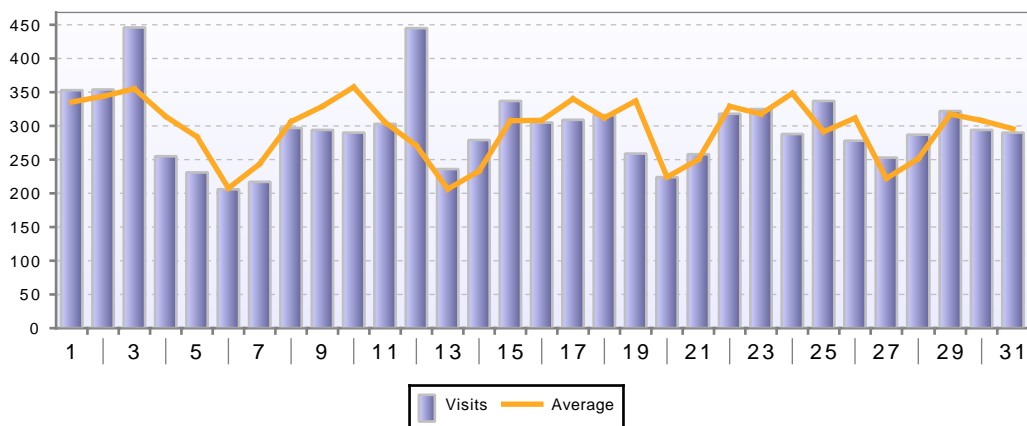
Returning Visitors (1. 10. 2007 - 31. 10. 2007)



day	Visitors	Returning Visitor Count	Average	%
1. 10. 2007	348	7	3,67	5,15
2. 10. 2007	342	2	5,00	1,47
3. 10. 2007	434	8	6,33	5,88
4. 10. 2007	253	3	6,67	2,21
5. 10. 2007	226	4	6,00	2,94
6. 10. 2007	198	2	3,33	1,47
7. 10. 2007	209	6	2,67	4,41
8. 10. 2007	291	3	4,67	2,21
9. 10. 2007	287	4	2,67	2,94
10. 10. 2007	280	2	5,67	1,47
11. 10. 2007	293	6	6,00	4,41
12. 10. 2007	439	5	5,00	3,68
13. 10. 2007	228	1	4,00	0,74
14. 10. 2007	275	6	3,67	4,41
15. 10. 2007	325	5	5,00	3,68
16. 10. 2007	299	3	2,33	2,21
17. 10. 2007	302	3	4,67	2,21
18. 10. 2007	306	5	5,67	3,68
19. 10. 2007	249	5	5,00	3,68
20. 10. 2007	222	2	2,33	1,47
21. 10. 2007	256	4	4,67	2,94
22. 10. 2007	313	2	5,00	1,47
23. 10. 2007	316	7	3,00	5,15
24. 10. 2007	287	4	4,33	2,94
25. 10. 2007	327	10	4,67	7,35
26. 10. 2007	266	3	4,67	2,21
27. 10. 2007	238	7	1,67	5,15
28. 10. 2007	280	7	5,33	5,15
29. 10. 2007	311	2	3,33	1,47
30. 10. 2007	286	6	4,67	4,41
31. 10. 2007	275	2	3,00	1,47

8. Visits

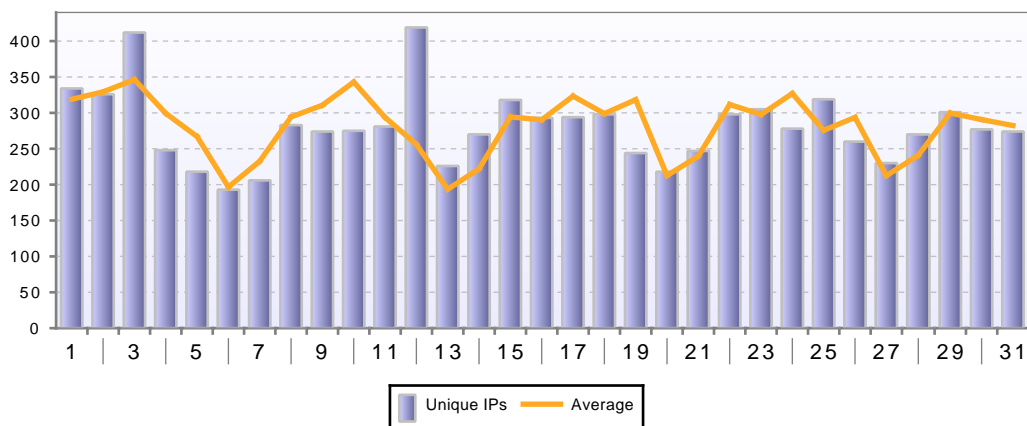
Visits (1. 10. 2007 - 31. 10. 2007)



day	Visits	Average	%
1. 10. 2007	353	335,33	3,83
2. 10. 2007	354	344,00	3,85
3. 10. 2007	446	355,00	4,84
4. 10. 2007	255	314,00	2,77
5. 10. 2007	231	283,67	2,51
6. 10. 2007	206	207,67	2,24
7. 10. 2007	217	243,67	2,36
8. 10. 2007	297	306,33	3,23
9. 10. 2007	294	329,00	3,19
10. 10. 2007	290	357,67	3,15
11. 10. 2007	303	305,33	3,29
12. 10. 2007	445	270,67	4,83
13. 10. 2007	236	206,33	2,56
14. 10. 2007	279	233,00	3,03
15. 10. 2007	337	307,67	3,66
16. 10. 2007	305	308,33	3,31
17. 10. 2007	309	340,00	3,36
18. 10. 2007	316	312,00	3,43
19. 10. 2007	259	337,00	2,81
20. 10. 2007	224	224,00	2,43
21. 10. 2007	258	250,33	2,80
22. 10. 2007	318	329,00	3,45
23. 10. 2007	325	317,67	3,53
24. 10. 2007	288	348,33	3,13
25. 10. 2007	337	291,33	3,66
26. 10. 2007	278	311,67	3,02
27. 10. 2007	253	222,00	2,75
28. 10. 2007	287	251,33	3,12
29. 10. 2007	322	317,33	3,50
30. 10. 2007	294	308,00	3,19
31. 10. 2007	290	295,67	3,15

9. Unique IPs

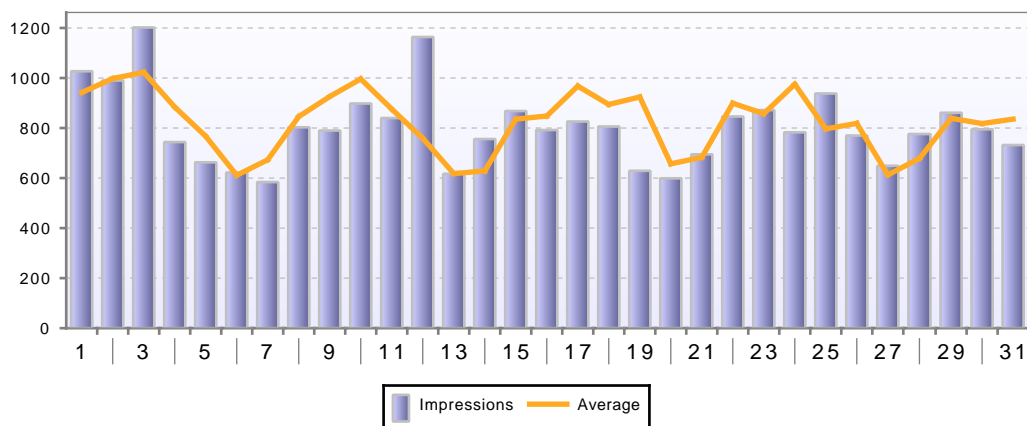
Unique IPs (1. 10. 2007 - 31. 10. 2007)



day	Unique IPs	Average	%
1. 10. 2007	334	319,00	3,84
2. 10. 2007	326	329,33	3,75
3. 10. 2007	412	346,33	4,74
4. 10. 2007	248	299,33	2,85
5. 10. 2007	218	267,00	2,51
6. 10. 2007	193	196,67	2,22
7. 10. 2007	206	232,67	2,37
8. 10. 2007	283	294,33	3,26
9. 10. 2007	274	310,67	3,15
10. 10. 2007	275	343,00	3,16
11. 10. 2007	281	293,67	3,23
12. 10. 2007	419	256,00	4,82
13. 10. 2007	226	193,67	2,60
14. 10. 2007	270	222,00	3,11
15. 10. 2007	318	294,33	3,66
16. 10. 2007	293	290,33	3,37
17. 10. 2007	294	323,33	3,38
18. 10. 2007	298	299,00	3,43
19. 10. 2007	244	318,33	2,81
20. 10. 2007	218	212,67	2,51
21. 10. 2007	247	239,67	2,84
22. 10. 2007	298	311,67	3,43
23. 10. 2007	305	297,67	3,51
24. 10. 2007	278	327,00	3,20
25. 10. 2007	319	275,67	3,67
26. 10. 2007	260	293,67	2,99
27. 10. 2007	230	212,33	2,65
28. 10. 2007	270	241,00	3,11
29. 10. 2007	301	299,67	3,46
30. 10. 2007	277	290,67	3,19
31. 10. 2007	274	282,33	3,15

10. Impressions

Impressions (1. 10. 2007 - 31. 10. 2007)



day	Impressions	Average	%
1. 10. 2007	1 027	942,00	4,12
2. 10. 2007	990	998,00	3,97
3. 10. 2007	1 202	1 022,67	4,82
4. 10. 2007	744	884,00	2,98
5. 10. 2007	663	767,00	2,66
6. 10. 2007	622	611,33	2,49
7. 10. 2007	584	673,00	2,34
8. 10. 2007	803	845,67	3,22
9. 10. 2007	790	926,00	3,17
10. 10. 2007	898	996,00	3,60
11. 10. 2007	840	875,67	3,37
12. 10. 2007	1 164	759,00	4,67
13. 10. 2007	617	618,00	2,47
14. 10. 2007	756	628,33	3,03
15. 10. 2007	868	835,67	3,48
16. 10. 2007	792	848,00	3,18
17. 10. 2007	826	967,67	3,31
18. 10. 2007	806	894,33	3,23
19. 10. 2007	629	924,00	2,52
20. 10. 2007	599	657,00	2,40
21. 10. 2007	695	683,00	2,79
22. 10. 2007	846	899,33	3,39
23. 10. 2007	872	857,33	3,50
24. 10. 2007	783	975,33	3,14
25. 10. 2007	938	796,67	3,76
26. 10. 2007	770	818,67	3,09
27. 10. 2007	649	612,67	2,60
28. 10. 2007	776	678,33	3,11
29. 10. 2007	861	839,00	3,45
30. 10. 2007	795	818,00	3,19
31. 10. 2007	732	835,67	2,94

11. Visited Pages

rank	Page	Impressions	%
1	http://regiony.digizone.cz/	10 423	41,80
2	http://regiony.digizone.cz/usti-nad-labem/	2 410	9,66
3	http://regiony.digizone.cz/praha/	2 080	8,34
4	http://regiony.digizone.cz/brno/	1 948	7,81
5	http://regiony.digizone.cz/ostrava/	1 739	6,97
6	http://iptv.digizone.cz/	1 032	4,14
7	http://regiony.digizone.cz/top-10-set-top-boxu/	748	3,00
8	indeterminable page address	665	2,67
9	http://iptv.digizone.cz/telefonica-o2-czech-republic/	455	1,82
10	http://regiony.digizone.cz/klimkovice/	452	1,81
11	http://iptv.digizone.cz/konkretni-nabidky-iptv-v-cr/	452	1,81
12	http://regiony.digizone.cz/domazlice/	449	1,80
13	http://iptv.digizone.cz/czech-online-volny/	378	1,52
14	http://iptv.digizone.cz/jak-prijimat-iptv/	347	1,39
15	http://regiony.digizone.cz/otazky-a-odpovedi/	345	1,38
16	http://iptv.digizone.cz/co-je-iptv-a-v-cem-se-lisi-od-kabelove-televize/	261	1,05
17	http://iptv.digizone.cz/mattes-ad-802-tv/	230	0,92
18	http://iptv.digizone.cz/co-vsechno-nabizi-iptv/	144	0,58
19	http://iptv.digizone.cz/t-systems-pragonet-viatv/	126	0,51
20	http://iptv.digizone.cz/iptv-jako-nova-vysilaci-technologie/	72	0,29
21	http://iptv.digizone.cz/maxprogres-99digitaltv/	67	0,27
22	http://iptv.digizone.cz/otazka-regulace-iptv/	59	0,24
23	http://iptv.digizone.cz/jak-prijimat-iptv/doporucit/	10	0,04
24	http://regiony.digizone.cz/doporucit/	7	0,03
25	http://regiony.digizone.cz/	5	0,02
26	http://regiony.digizone.cz/praha/doporucit/	3	0,01
27	http://localhost/	2	0,01
28	http://regiony.digizone.cz/domazlice/doporucit/	2	0,01
29	http://regiony.digizone.cz/klimkovice/doporucit/	2	0,01
30	http://iptv.digizone.cz/mattes-ad-802-tv/doporucit/	2	0,01
31	http://regiony.digizone.cz/usti-nad-labem/doporucit/	2	0,01
32	http://127.0.0.1:4664/preview?event_id=79356&schema_id=2&q=klimkovice&s=00000000000000000000000000000000	2	0,01
33	http://209.85.135.104/search?q=cache:jkeiGW4nvpsJ:regiony.digizone.cz/praha/+Kde+je+program+Public+TV&hl=cs&ct=clnk&cd=50&gl=cz&lr=lang_cs	2	0,01
34	http://digizone-tomas.iinfo.cz/annex-iptv/	1	0,00
35	http://regiony.digizone.cz/brno/doporucit/	1	0,00
36	http://regiony.digizone.cz./usti-nad-labem/	1	0,00
37	http://cc.msnsocache.com/cache.aspx?q=72279958395609&mkt=cs-CZ&lang=cs-CZ&w=4d3003a7&FORM=CVRE6	1	0,00
38	http://209.85.135.104/search?q=cache:aHYxYcHiXtIj:iptv.digizone.cz/+iptv&hl=cs&ct=clnk&cd=1&gl=cz	1	0,00
39	http://127.0.0.1:4664/preview?event_id=274079&schema_id=2&q=kalend%C3%A1%C5%99&s=00000000000000000000000000000000	1	0,00
40	http://209.85.135.104/search?q=cache:8BXy9PX_CdIj:regiony.digizone.cz/brno/+mapa+pokryti+primy&hl=cs&ct=clnk&cd=5&gl=cz	1	0,00

12. Entry and Exit Points

Entry Points

rank	Entry Page	Visits	%
1	http://regiony.digizone.cz/	6 155	66,47
2	http://iptv.digizone.cz/	677	7,31
3	http://regiony.digizone.cz/usti-nad-labem/	300	3,24
4	http://iptv.digizone.cz/telefonica-o2-czech-republic/	262	2,83
5	http://iptv.digizone.cz/czech-online-volny/	245	2,65
6	http://regiony.digizone.cz/brno/	239	2,58
7	indeterminable page address	230	2,48
8	http://regiony.digizone.cz/ostrava/	203	2,19
9	http://regiony.digizone.cz/top-10-set-top-boxu/	145	1,57
10	http://iptv.digizone.cz/jak-prijimat-iptv/	139	1,50
11	http://iptv.digizone.cz/mattes-ad-802-tv/	137	1,48
12	http://regiony.digizone.cz/praha/	122	1,32
13	http://iptv.digizone.cz/t-systems-pragonet-viatv/	76	0,82
14	http://iptv.digizone.cz/konkretni-nabidky-iptv-v-cr/	62	0,67
15	http://regiony.digizone.cz/klimkovice/	62	0,67
16	http://iptv.digizone.cz/co-je-iptv-a-v-cem-se-lisi-od-kabelove-televize/	60	0,65
17	http://regiony.digizone.cz/domazlice/	33	0,36
18	http://regiony.digizone.cz/otazky-a-odpovedi/	24	0,26
19	http://iptv.digizone.cz/maxprogres-99digitaltv/	21	0,23
20	http://iptv.digizone.cz/co-vsechno-nabizi-iptv/	13	0,14

Exit Points

rank	Exit Page	Visits	%
1	http://regiony.digizone.cz/	3 891	42,02
2	http://regiony.digizone.cz/usti-nad-labem/	879	9,49
3	http://regiony.digizone.cz/brno/	683	7,38
4	http://regiony.digizone.cz/praha/	584	6,31
5	http://regiony.digizone.cz/ostrava/	532	5,75
6	http://iptv.digizone.cz/	389	4,20
7	http://regiony.digizone.cz/top-10-set-top-boxu/	287	3,10
8	http://iptv.digizone.cz/telefonica-o2-czech-republic/	284	3,07
9	http://iptv.digizone.cz/czech-online-volny/	255	2,75
10	indeterminable page address	249	2,69
11	http://iptv.digizone.cz/jak-prijimat-iptv/	176	1,90
12	http://regiony.digizone.cz/klimkovice/	159	1,72
13	http://iptv.digizone.cz/konkretni-nabidky-iptv-v-cr/	147	1,59
14	http://iptv.digizone.cz/mattes-ad-802-tv/	146	1,58
15	http://regiony.digizone.cz/otazky-a-odpovedi/	138	1,49
16	http://regiony.digizone.cz/domazlice/	125	1,35
17	http://iptv.digizone.cz/co-je-iptv-a-v-cem-se-lisi-od-kabelove-televize/	98	1,06
18	http://iptv.digizone.cz/t-systems-pragonet-viatv/	78	0,84
19	http://iptv.digizone.cz/co-vsechno-nabizi-iptv/	42	0,45
20	http://iptv.digizone.cz/maxprogres-99digitaltv/	33	0,36

13. Referrers

Referring Servers

rank	Referring Server	Visits	%
1	www.digizone.cz	5 112	59,11
2	search.seznam.cz	2 143	24,78
3	www.google.cz	551	6,37
4	satelit.digizone.cz	198	2,29
5	www.google.com	179	2,07
6	search.centrum.cz	129	1,49
7	tutorialy.digizone.cz	70	0,81
8	search.atlas.cz	51	0,59
9	iptv.lupa.cz	28	0,32
10	www.google.sk	22	0,25
11	search1.seznam.cz	13	0,15
12	regiony.digizone.cz	11	0,13

Referring Search Engines

	Referring Search Engine	Visits	%
1	Seznam.cz (fulltext CR)	2 143	68,60
2	Google.cz	552	17,67
3	Google.com	179	5,73
4	Centrum.cz (mix)	129	4,13
5	Atlas.cz (mix)	51	1,63
6	Google Slovak Republic	22	0,70
7	Jyxo.cz (fulltext)	9	0,29
8	Windows Live Search (fulltext)	6	0,19
9	Google Turkey	4	0,13
10	Tiscali.cz (fulltext)	4	0,13
11	Centrum.cz (fulltext)	3	0,10
12	Google (images)	3	0,10

Search Queries

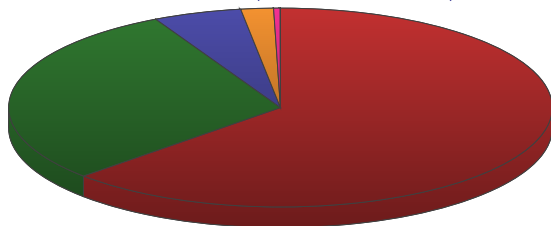
	Search Query	Visits	%
1	digitální vysílání	894	28,62
2	iptv	301	9,64
3	pokrytí digitálním signálem	131	4,19
4	digitální vysílání brno	49	1,57
5	digitální vysílání ostrava	46	1,47
6	ican 3800tw - ip	36	1,15
7	digitalni vysilani	30	0,96
8	ústí nad labem	30	0,96
9	set top box	28	0,90
10	802.tv	27	0,86
11	digizone.cz	27	0,86
12	digitální signál pokrytí	21	0,67

14. Browsers and Operating Systems

Browsers - Families

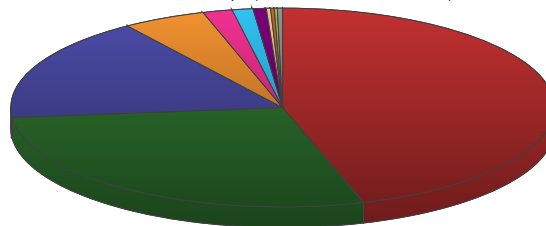
Browsers - Groups

Browsers - Families (1. 10. 2007 - 31. 10. 2007)



rank	Browser	Visits	%
1	MS Internet Explorer for Windows	5 791	62,90
2	Mozilla Gecko and derivatives	2 717	29,51
3	Opera	483	5,25
4	Unknown or indeterminable browsers	178	1,93
5	WebKit/KHTML and derivatives	36	0,39
6	Browsers which hide their identity	1	0,01

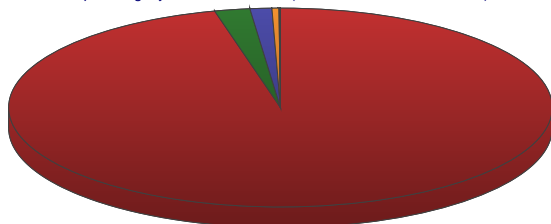
Browsers - Groups (1. 10. 2007 - 31. 10. 2007)



rank	Browser	Visits	%
1	MS Internet Explorer (Win) 6.x	4 160	45,19
2	Mozilla Gecko 1.8 and higher	2 597	28,21
3	MS Internet Explorer (Win) 7.x	1 559	16,93
4	Opera 9.x	455	4,94
5	Browsers Not Detected	161	1,75
6	Mozilla Gecko 1.7-1.8 (development)	114	1,24
7	MS Internet Explorer (Win) 5.x	72	0,78
8	Opera 8.x	23	0,25
9	WebKit 400-499	20	0,22
10	Indeterminable browsers	17	0,18

Operating Systems - Families

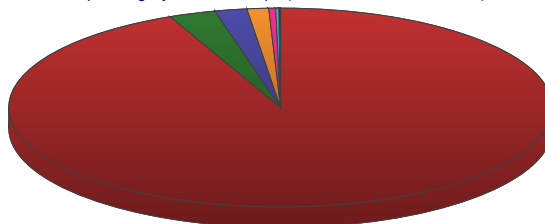
Operating Systems - Families (1. 10. 2007 - 31. 10. 2007)



rank	Operating System	Visits	%
1	Microsoft Windows	8 848	96,11
2	unknown or indeterminable OS	193	2,10
3	UNIX and derivates	119	1,29
4	Apple Mac	38	0,41
5	mobile devices	6	0,07
6	hidden by the browser	2	0,02

Operating Systems - Groups

Operating Systems - Groups (1. 10. 2007 - 31. 10. 2007)

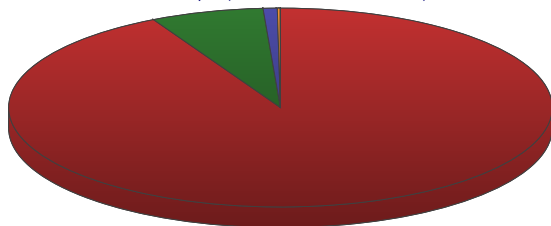


rank	Operating System	Visits	%
1	MS Windows NT Technologie	8 594	93,35
2	MS Windows 95/98/Me	254	2,76
3	OS not detected	176	1,91
4	Linux	118	1,28
5	Mac OS X	38	0,41
6	indeterminable OS	17	0,18
7	Symbian OS	6	0,07
8	hidden by the browser	2	0,02
9	FreeBSD	1	0,01

15. Technical Data

Color Depth

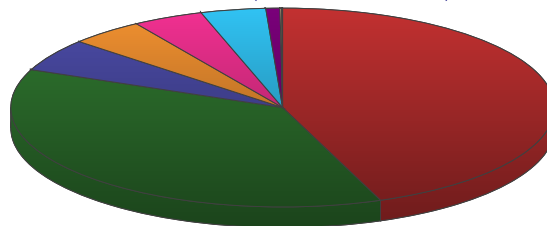
Color Depth (1. 10. 2007 - 31. 10. 2007)



rank	Color Depth	Visits	%
1	TrueColor (24 bits)	8 494	92,27
2	HiColor (15/16 bits)	618	6,71
3	unknown	77	0,84
4	256 colors (8 bits)	16	0,17
5	less than 256 colors	1	0,01

Screen Resolution

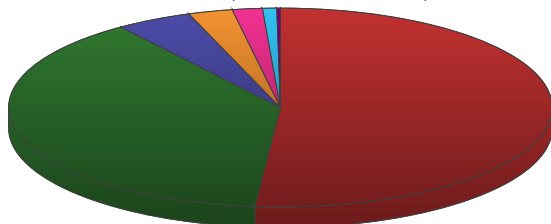
Screen Resolution (1. 10. 2007 - 31. 10. 2007)



rank	Screen Resolution	Visits	%
1	1024 x 768 pixels	4 063	44,13
2	1280 x 1024 pixels	3 414	37,08
3	800 x 600 pixels	490	5,32
4	1152 x 864 pixels	407	4,42
5	1600 x 1200 pixels or more	386	4,19
6	1400 x 1050 pixels	355	3,86
7	unknown	77	0,84
8	less than 640 x 480 pixels	9	0,10
9	640 x 480 pixels	5	0,05

Window Size

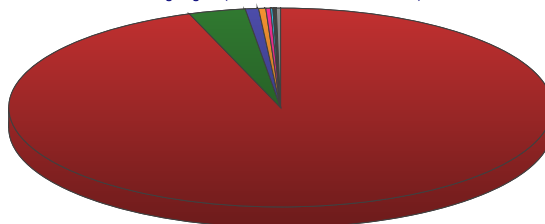
Window Size (1. 10. 2007 - 31. 10. 2007)



rank	Window Size	Visits	%
1	801 - 1024 pixels	4 741	51,50
2	1025 - 1280 pixels	3 545	38,51
3	1281 - 1600 pixels	417	4,53
4	641 - 800 pixels	242	2,63
5	1601 pixels or more	164	1,78
6	unknown	77	0,84
7	less than 641 pixels	20	0,22

Languages

Languages (1. 10. 2007 - 31. 10. 2007)

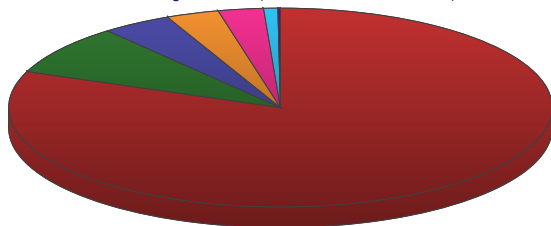


rank	Language	Visits	%
1	Czech	8 705	94,56
2	English	310	3,37
3	Slovak	72	0,78
4	German	39	0,42
5	Unknown	26	0,28
6	Polish	12	0,13
7	Turkish	6	0,07
8	Spanish	5	0,05
9	Invalid language code	4	0,04
10	French	4	0,04

16. More Technical Data

Flash Plugin Version

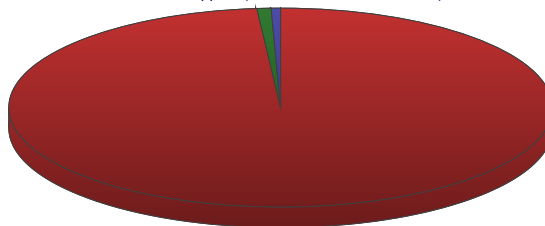
Flash Plugin Version (1. 10. 2007 - 31. 10. 2007)



rank	Flash Plugin Version	Visits	%
1	Flash 9	7 447	80,89
2	Flash 8	749	8,14
3	Flash 6	382	4,15
4	Flash 7	289	3,14
5	unsupported	248	2,69
6	unknown	77	0,84
7	Flash 5	13	0,14
8	Flash 4	1	0,01

Cookies Support

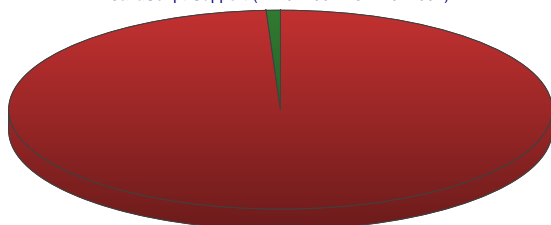
Cookies Support (1. 10. 2007 - 31. 10. 2007)



rank	Supported	Visits	%
1	yes	9 078	98,61
2	unknown	77	0,84
3	no	51	0,55

JavaScript Support

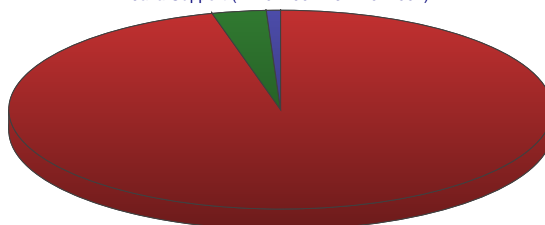
JavaScript Support (1. 10. 2007 - 31. 10. 2007)



rank	Supported	Visits	%
1	yes	9 129	99,16
2	no	77	0,84
3	unknown	0	0,00

Java Support

Java Support (1. 10. 2007 - 31. 10. 2007)



rank	Supported	Visits	%
1	yes	8 833	95,95
2	no	296	3,22
3	unknown	77	0,84

17. Info on Visiting Hosts

Hosts by Region in the Czech Republic

rank	Region	Visits	%
1	outside the Czech Republic, no distinction made	3 067	33,32
2	Praha hl.m.	2 081	22,60
3	region neznámý	1 867	20,28
4	Brno-město	299	3,25
5	Česká Lípa	115	1,25
6	Chomutov	109	1,18
7	Ostrava-město	93	1,01
8	Plzeň-město	77	0,84
9	České Budějovice	71	0,77
10	Liberec	52	0,56
11	Ústí nad Labem	51	0,55
12	Brno-venkov	48	0,52

Hosts by Connection Type

rank	Connection Type	Visits	%
1	outside the Czech Republic, no distinction made	3 111	33,79
2	leased line	2 890	31,39
3	unknown	1 034	11,23
4	ADSL	988	10,73
5	wireless	561	6,09
6	cable TV	242	2,63
7	GPRS	213	2,31
8	dial-up	102	1,11
9	sub-ISP	47	0,51
10	CDMA	11	0,12
11	ISP routing network (backbone)	5	0,05
12		1	0,01

Hosts by Internet Service Provider

rank	Internet Service Provider	Visits	%
1	outside the Czech Republic, no distinction made	3 067	33,32
2	Internet OnLine	1 141	12,39
3	GTS Novera	787	8,55
4	České radiokomunikace, a.s.	440	4,78
5	net4net, a.s.	330	3,58
6	TEN-155	290	3,15
7	UPC ČR	289	3,14
8	GIN	287	3,12
9	Eurotel Praha, s.r.o.	228	2,48
10	Sloane Park Property Trust a. s.	194	2,11
11	CL-NET s.r.o.	173	1,88
12	Contactel	136	1,48

18. Info on Visitors' Behavior

Time per Page

rank	Time per Page (minutes)	Impressions	%
1	0:30	7 846	50,05
2	1:00	2 239	14,28
3	1:30	1 375	8,77
4	2:00	901	5,75
5	2:30	624	3,98
6	3:00	464	2,96
7	3:30	339	2,16
8	4:00	262	1,67
9	4:30	197	1,26

Time per Visit

rank	Time per Visit (minutes)	Visits	%
1	0:30	1 452	25,74
2	1:00	573	10,16
3	1:30	440	7,80
4	2:00	390	6,91
5	2:30	308	5,46
6	3:00	273	4,84
7	3:30	210	3,72
8	4:00	187	3,31
9	4:30	172	3,05
10	5:00	143	2,53
11	5:30	115	2,04
12	6:00	112	1,99

Pages per Visit

rank	Pages per Visit	Visits	%
1	1	3 618	39,07
2	2	2 258	24,38
3	3	1 267	13,68
4	4	764	8,25
5	5	455	4,91
6	6	266	2,87
7	7	190	2,05
8	8	121	1,31

19. Legend

19.1. Description of Basic Terms

An exhaustive list and description of the terms can be found at <http://en.navrcholu.cz/Help/>

19.2. Visit

Is a series of requests to the site from a single browser, where the delay between any two requests is at most 30 minutes. If the delay exceeds 30 minutes, the new request refers to another visit.

19.3. Visitor

Is a unique visitor (a person) who made at least one visit to the monitored site during a given time period. Visitors are identified by cookies, which means (with some degree of simplification) that unique browsers are really counted by the system, but usually a single browser is used by a single person.

19.4. Active Visitor

Is a visitor who visits a given site regularly. An active visitor has made at least two visits to the site in the same day for the daily overview, three visits in different days for the weekly overview and three visits in different weeks for the monthly overview.

19.5. Page Impression

Is every page which was requested by a visitor of the given site and which contained a correctly placed NAVRCHOLU.cz monitoring code.

19.6. IP Address

Is a number that uniquely identifies the computer in the Internet. IP addresses look like this: 81.31.5.5 or 194.125.189.147. Presently, this quantity doesn't tell anything about the server traffic - on the one hand a single IP address may represent a whole company or school if they use a proxy server or firewall to access the Internet, and on the other hand a single dial-up user may be assigned a different IP address each time she connects to the Internet. In spite of that, this value may be useful to some webmasters.

19.7. Referring Pages

Shows the addresses of pages with the link that a visitor clicked on to get to the monitored site. Browsers are not required to pass a valid referrer and some browsers can be configured to block it. This is why you may find Suppressed or Blocked in the statistics.

19.8. Referring Servers

Shows the addresses of servers where a visitor clicked a link to the monitored site, if it started a new visit. It doesn't tell you the specific page; instead, it sums the data for a whole server, e.g. the total number of visits started by clicking a link at www.seznam.cz or www.google.com.

19.9. Referring Search Engines

Shows which search engines were used by the most visitors to enter the site. The list of known search engines is constantly updated.

19.10. Search Queries

Word or phrase entered into a search engine. The search results link to the monitored site, so site owners can learn which words bring visitors to their sites.

19.11. Browser

Software (a program) that allows the user to view Internet pages. You are reading this help in a browser. The most popular browsers include Microsoft Internet Explorer, Mozilla Firefox, Netscape and Opera.

19.12. Operating System

The essential software in a computer. A computer without any operating system is more or less a useless box. The most common system is Windows, but there are other systems, such as Linux, Mac OS, FreeBSD and many more.